

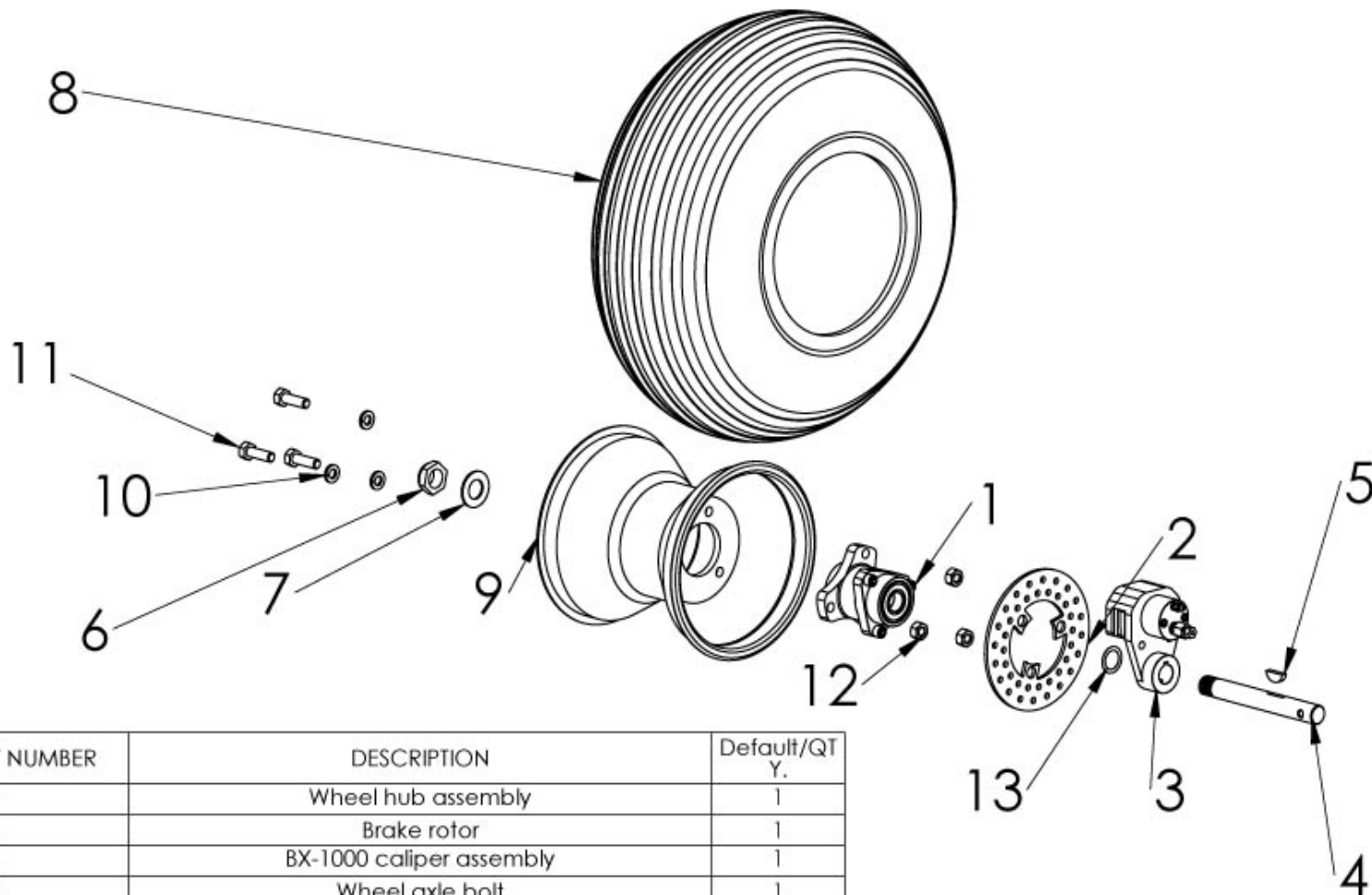
BX-1000 BLACK MAX



PLEASE READ THROUGH THE ENTIRE MANUAL BEFORE INSTALLING YOUR BRAKE SYSTEM

WARNING - DO NOT USE BRAKE FLUID - USE ATF HYDRAULIC FLUID ONLY

- **IMPORTANT**** DO NOT USE ANY OTHER SEALS OTHER THEN WHAT IS SUPPLIED WITH THIS SYSTEM. INCOMPATIBLE SEALS WILL RESULT IN SYSTEM FAILURE
- **IMPORTANT**** USE ATF FLUID ONLY (*Automatic Transmission Fluid*) ANY OTHER FLUID MAY DAMAGE THE SYSTEM
- **IMPORTANT**** DO NOT USE BRAKE FLUID WITH THIS SYSTEM. BRAKE FLUID WILL DAMAGE THE SEALS
- **IMPORTANT**** DO NOT EXCEED THE GROSS WEIGHT LIMIT OF 1000 LBS
- **IMPORTANT**** USE PROVIDED LOCK NUTS AND LOCK WASHERS TO PREVENT WHEEL FROM LOOSENING
- **IMPORTANT**** REPLACE TIRES ANNUALLY OR WHEN SHOWING EXCESSIVE WEAR.
- **IMPORTANT**** DO NOT USE IF THERE IS ANY SIGN OF LEAKING. MAKE REPAIRS IMMEDIATELY
- **IMPORTANT**** MOUNT CALIPER WITH A BLEEDER SCREW LOCATED IN THE TOP POSITION ONLY. USE THE NYLON TIPPED SET SCREWS TO PLUG THE TWO OTHER UNUSED BLEEDER SCREW LOCATIONS.
- **IMPORTANT**** MOUNT THE MASTER CYLINDER IN AN UPRIGHT POSITION TO PREVENT OIL FROM LEAKING FROM THE VENT PLUG.
NOTE: MASTER CYLINDER CAN BE MOUNTED SIDEWAYS WITH SPECIAL VENT KIT.
- **IMPORTANT**** NOTICE THE ATF HYDRAULIC FLUID WILL DISCOLOR IN DIRECT SUN LIGHT AND SHOW CLEAR IN SOME AREAS AND WILL APPEAR AS IF THERE IS AIR IN THE LINES
- **IMPORTANT**** ALWAYS REPLACE THE NYLOCK AXLE NUT AFTER REMOVING IT MORE THEN TWO TIMES



ITEM NO.	PART NUMBER	DESCRIPTION	Default/QT Y.
1	44772	Wheel hub assembly	1
2	44746	Brake rotor	1
3	44766	BX-1000 caliper assembly	1
4	44748	Wheel axle bolt	1
5	44750	woodruff key	1
6	15101	5/8"-11 Nyloc thin nut	1
7	AN960-1016	5/8" Flat washer	1
8	14303	6" tire	1
9	14302	6" polished aluminum wheel	1
10	LW 0.3125		3
11	HBOLT 0.3125-18x1x1-N		3
12	HNUT 0.3125-18-D-N		3
13	44845	Caliper spacer washer	1

Notes:

UNLESS OTHERWISE SPECIFIED:

DIMENSIONS ARE IN INCHES
 TOLERANCES:
 FRACTIONAL $\pm 1/8"$
 ANGULAR: MACH $\pm .5^\circ$ BEND $\pm 1^\circ$
 TWO PLACE DECIMAL $\pm .030$
 THREE PLACE DECIMAL $\pm .005$

MATERIAL

FINISH

DO NOT SCALE DRAWING



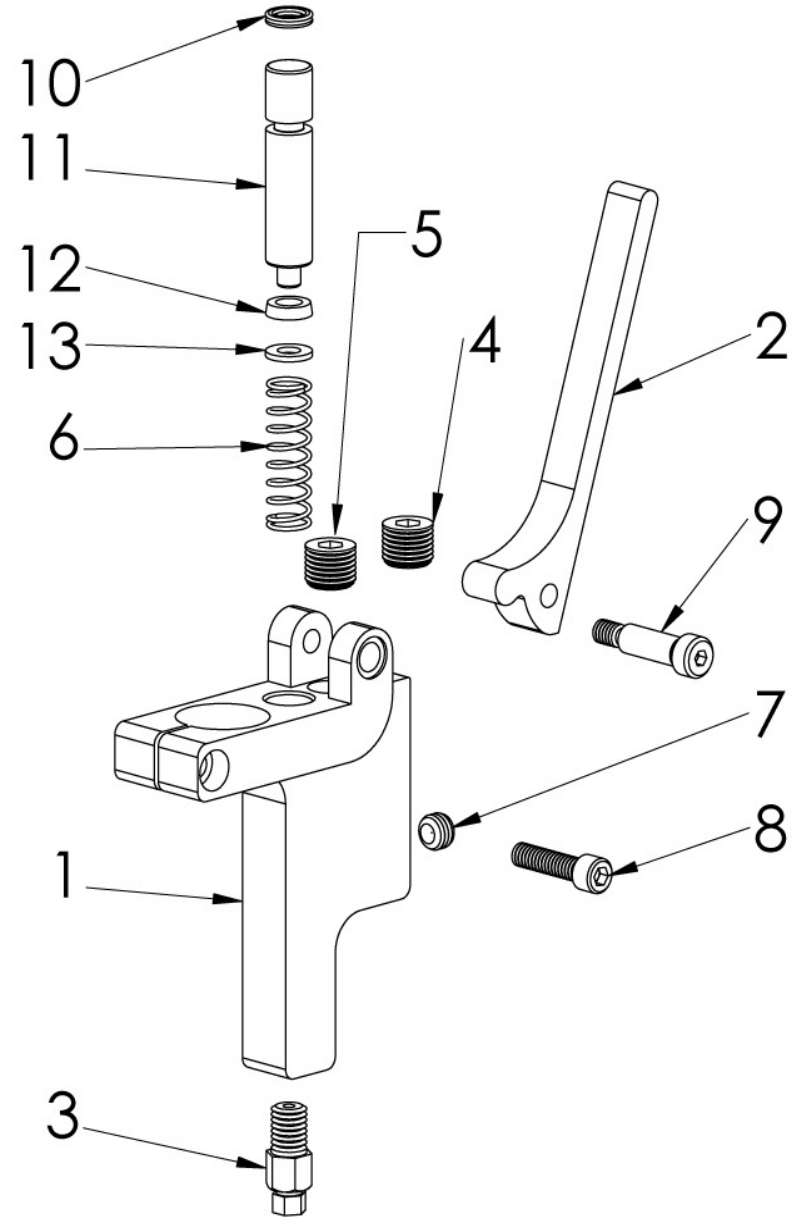
TITLE:
 BX-1000 wheel/brake assembly

Part # _____ Qty Req'd _____

SCALE: 1:8 WEIGHT: _____ REV: _____

ITEM NO.	PART NUMBER	DESCRIPTION	QTY.
1	44742	Master Cylinder	1
2	44747	Brake handle	1
3	44756	1/8" NPT to 1/8" tube compression fitting	1
4	44758	1/8" NPT plug	1
5	44759	1/8" NPT vent plug	1
6	44761	Return spring	1
7	44760	1/8" NPT plug	1
8	44763	1/4"-20 SHCS S.S.	1
9	44762	Shoulder screw	1
10	44749	O-ring	1
11	44745	Master cylinder piston	1
12	44776	Cup Seal	1
13	44777	Cup seal washer	1

Notice: If replacing item 3, 5, or 7 make sure to use a loctite sealant or teflon tape.



Notes:

UNLESS OTHERWISE SPECIFIED:

DIMENSIONS ARE IN INCHES
 TOLERANCES:
 FRACTIONAL $\pm 1/8"$
 ANGULAR: MACH $\pm .5^\circ$ BEND $\pm 1^\circ$
 TWO PLACE DECIMAL $\pm .030$
 THREE PLACE DECIMAL $\pm .005$

MATERIAL

FINISH

DO NOT SCALE DRAWING



TITLE:

Master Cylinder Assembly

Part #

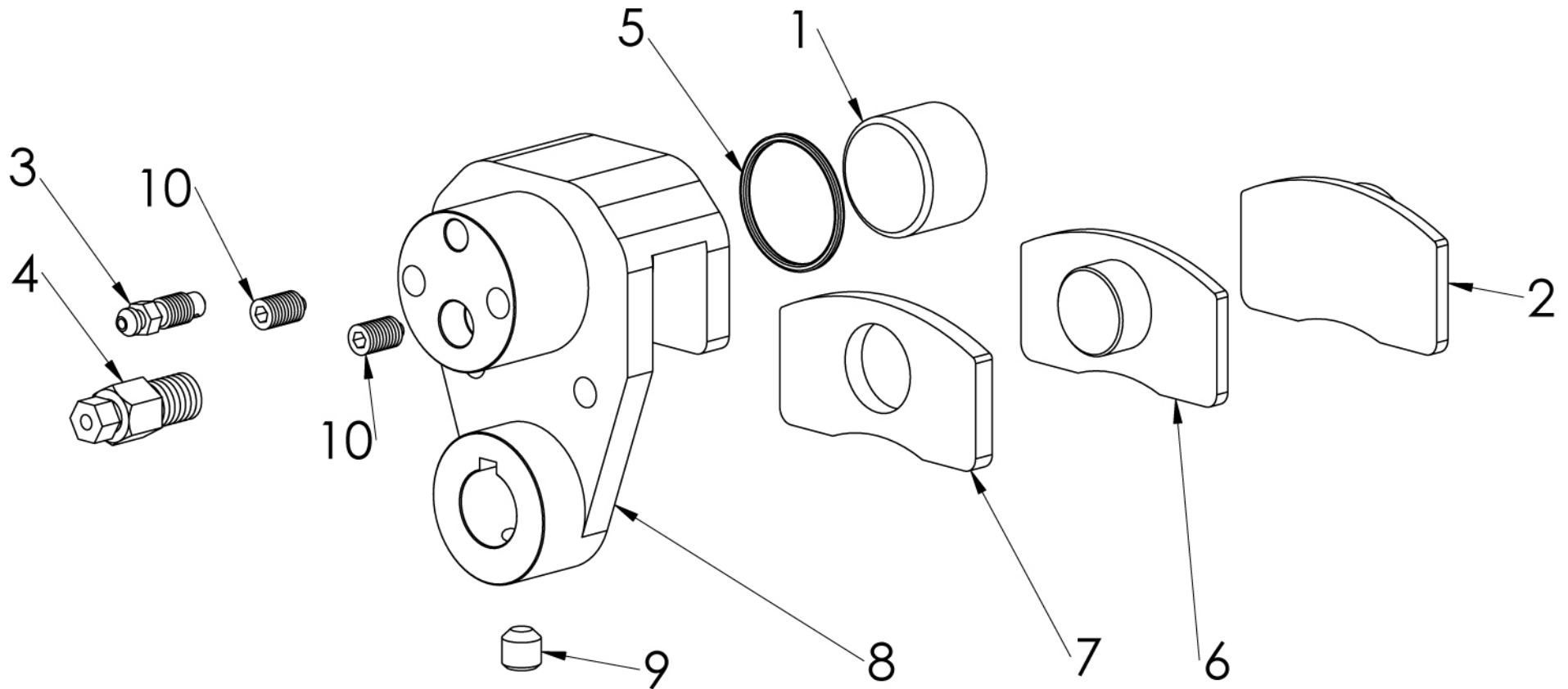
44764

Qty Req'd

SCALE: 1:8

WEIGHT:

REV:1



Notice: Item 3 (bleeder screw) must be located in the top position to assure all air is bled from the system. Use item 10 (Bleed screw hole plug) to plug of the other two bleeder screw locations. These locations are used in cases where the caliper needs to be mounted 90 degrees left or right.

ITEM NO.	PART NUMBER	DESCRIPTION	QTY.
1	44740	Caliper piston	1
2	44753	Outer brake pad	1
3	44767	Bleeder screw	1
4	44756	1/8" NPT to 1/8" tube compression fitting	1
5	44765	Quad ring seal	1
6	44751-1	inner brake pad	1
7	44752-1	Inner brake pad backer	1
8	44741	caliper housing	1
9	44757	5/16-18 set screw	1
10	44827	Bleeder screw hole plug	2

Notes:

UNLESS OTHERWISE SPECIFIED:
 DIMENSIONS ARE IN INCHES
 TOLERANCES:
 FRACTIONAL $\pm 1/8"$
 ANGULAR: MACH $\pm .5^\circ$ BEND $\pm 1^\circ$
 TWO PLACE DECIMAL $\pm .030$
 THREE PLACE DECIMAL $\pm .005$

MATERIAL

FINISH

DO NOT SCALE DRAWING



TITLE:

BX-1000 caliper assembly

Part #

44766

Qty Req'd

SCALE: 1:8

WEIGHT:

REV:

5

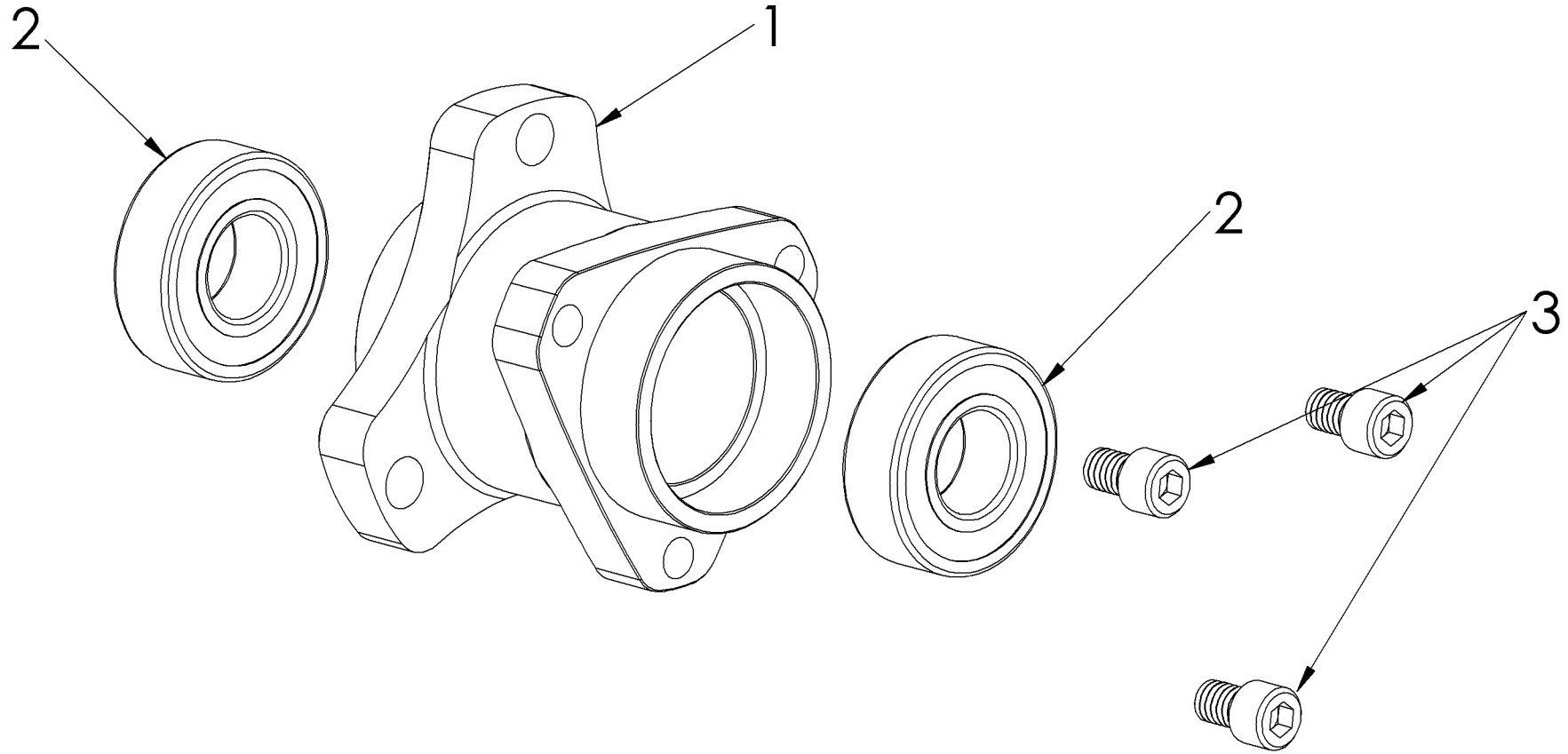
4

3

2

1

Notice: Item 3 must be inserted with a loctite thread locker to prevent screws from loosening.



ITEM NO.	PART NUMBER	DESCRIPTION	QTY.
1	44744	Wheel hub	1
2	44755	Double sealed ball bearing	2
3	44770	1/4"-20 X .375 SHCS	3

TITLE: Wheel hub assembly

Notes:

UNLESS OTHERWISE SPECIFIED:
 DIMENSIONS ARE IN INCHES
 TOLERANCES:
 FRACTIONAL $\pm 1/8"$
 ANGULAR: MACH $\pm .5^\circ$ BEND $\pm 1^\circ$
 TWO PLACE DECIMAL $\pm .030$
 THREE PLACE DECIMAL $\pm .005$

MATERIAL
 FINISH
 DO NOT SCALE DRAWING



Part #	44772	Qty Req'd
SCALE: 1:8	WEIGHT:	REV:

5



4

3

2

1

1. Mount Tire

Apply soapy water to edge of tire bead and wheel rim. Push one side of tire on to rim at a time with a twisting motion at a slight angle. Place a wood block under rim and with firm pressure seat the bottom tire bead to the bottom rim. (Make sure valve stem is facing up) Flip the tire and rim and set the tire between two wood blocks or a 5 gallon bucket. Connect air chuck and with the air flowing into rim press down on the rim to seat the top edge of tire bead. Inflate to desired pressure.



2. Mount Hub To Wheel

Attach the hub to the wheel on the opposite side of valve stem with supplied hex headed bolts. Apply the flange nuts to the back side of hex headed bolts to secure hub to wheel.

Note: Make sure to insert lock washers under the bolt head



3. Mount 5/8" Axle

Mount supplied 5/8" axel bolt to your air frame with key way slot facing up allowing 3" of clearance plus the length of threads for the caliper and wheel hub.

(Note: You may need to fabricate your own mounting system or contact FBI for custom made mounting hardware.)



4. Mount Caliper To Axle Bolt

Making sure that the woodruff key is inserted into the 5/8" axle and that the bleeder screw is in the highest position, slide caliper on to axle and secure the set screw located at the bottom. Note: bleeder screw should be located at the highest position and the other two bleeder screw locations are to be plugged.



5. Install Rotor

Insert the rotor between the brake pads.



6. Install Wheel and Hub Assembly On To Axle

Install the socket headed cap screws to back side of hub. Slide the wheel and hub assembly on to the 5/8" axle and line up the 3 rotor holes over the heads of the socket headed cap screws. Tighten main axle nut up slightly snug and back it up 1/4 turn or until wheel spins freely.

Note: This rotor is a full floating rotor and does not have any other mounting hardware to fasten to the wheel hub.



7. Mount Master Cylinder To Control Stick

Slide Master cylinder over 1" control stick locating the brake handle forward and secure by tightening the clamp screw.



8. Install Brake Line and Compression Fittings

Connect fittings to the calipers and master cylinder. Using the "T" connector route brake line and connect both calipers to the master cylinder by inserting the brake line about 1/2" through the male compression fitting into the female fitting keeping the line inside fitting as far as it will go and then tighten the male fitting.

Note: The ferrule will break free from the male compression fitting once it has been tightened.



9. Add Oil and Bleed System

Remove reservoir plug and fill reservoir with ATF fluid. Crack the bleeder screw on one of the calipers and pump the master cylinder handle. Continue to add ATF fluid into the reservoir until you have pumped fluid into the calipers and removed all air. Make sure you do not deplete the reservoir of ATF fluid while bleeding the system to prevent any air entering the lines. Once fluid has passed through the bleeder screw, lightly tighten and continue this step with the other caliper until all air is gone.



10. Congratulations

You just installed the best brake system on the market.



WARRANTY

1 YEAR LIMITED WARRANTY ON ALL PARTS ONLY UNDER CONDITIONS OF NORMAL AND INTENDED USE. MISUSE, DAMAGE OR ALTERATION OF ANY COMPONENT VOIDS THE WARRANTY.

BRAKE PADS AND ROTORS ARE EXCLUDED FROM WARRANTY

USE OF ANY OTHER FLUID OTHER THAN ATF FLUID VOIDS THIS WARRANTY.

NO OTHER WARRANTIES WRITTEN, VERBAL, IMPLIED OR OTHER THAN LISTED HERE WILL BE HONORED.



**1380 LEGION ROAD
DETROIT LAKES, MN 56501
PHONE: (218) 844-5914 (800) 850-3708
Website: www.flyfbi.com
Email: sales@flyfbi.com**